

Installation

1

Preparing for Success

Your new TypeHaus eFormsBox™ has arrived pre-customized for your specific application by one of TypeHaus' Solution Partners. This Solution Partner has the knowledge and expertise to provide you with the best assistance for your specific application.

For the best support, be sure to contact your Solution Partner with any questions regarding your new eFormsBox.

Before installing the eFormsBox, follow the printer manufacturer's instructions for installing the printer on the network. Confirm that a test page will print from a workstation that will be used for printing.

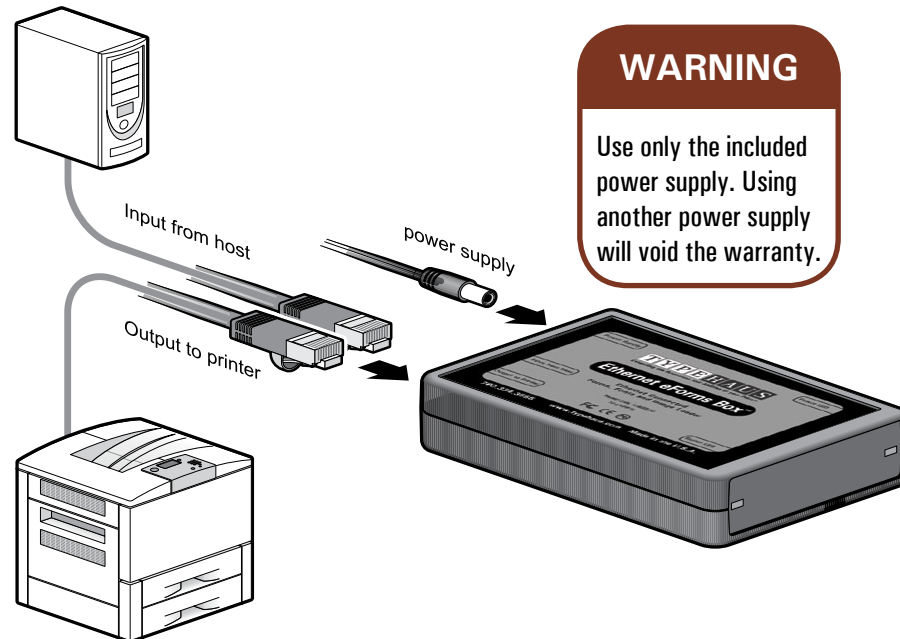
Each printer model is unique. The printer manufacturer's instructions, web site, and customer support always provide the best printer installation assistance prior to installing the eFormsBox.

2

Installing the eFormsBox

Be sure to install and test the printer on the network before proceeding.

Power on the printer and wait for ready/online status.



WARNING

Use only the included power supply. Using another power supply will void the warranty.

3

Detach the Ethernet network cable from the printer and attach it to the "Input from Host" port on the eFormsBox.

4

Attach the supplied 3 foot Ethernet cable to the printer's Ethernet port (the same port from which the network cable was detached in the previous step).

5

Attach the other end of the supplied 3 foot Ethernet cable to the "Output to Printer" port on the eFormsBox.

6

Plug the supplied 5 volt power supply into a 110 volt outlet. It is preferable, but not required, to plug it into the same power strip as the printer. See **WARNING** box on this page.

7

Insert the round power supply connector into the eFormsBox "Power Supply" port. The eFormsBox Power LED will light green (possibly after blinking orange), then the Status LED will light green.

8

The printer can also be powered on after the eFormsBox. There may be up to a one minute delay after the printer indicates it is ready before the printer accepts the resources from the eFormsBox.

TypeHaus, Inc.
655 Second Street
Encinitas, CA 92024
760.334.3555
www.typehaus.com

TypeHaus Reorder Part Number 11B568-00

© 2010 TypeHaus, Inc. All rights reserved. (1550-100414A)
eFormsBox is a trademark of TypeHaus, Inc.