

CheckJet

Installation



Extending the Resources and Abilities of Your Printer

1

Preparing for Success

Before installing the CheckJet™, follow the printer manufacturer's instructions for installing the printer on the network. Confirm that a Windows printer test page will print from the workstation that will be used for check printing.

Each printer model is unique. The printer manufacturer's instructions, web site, and customer support always provide the best printer installation assistance prior to installing the CheckJet.

The CheckJet requires a PCL5/5e compatible Windows driver. When installing the printer, select the printer's PCL5/5e driver. If during installation there is no option to specify a driver, or if the printer is already installed, confirm the driver in use is a PCL5/5e driver.

If needed, a PCL5/5e driver can normally be found on the printer manufacturer's web site or printer CD. To install a manufacturer supplied driver, follow the manufacturer's instructions for the driver.

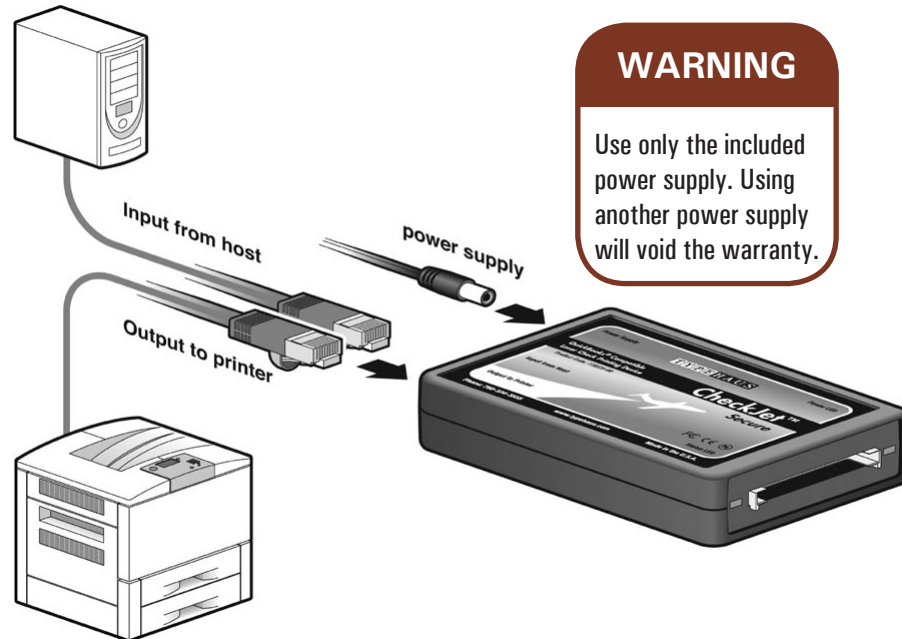
The CheckJet CD contains a universal PCL5/5e driver. To install the universal driver use Windows File Explorer to browse to the CheckJet CD and then into the folders Driver » XP and Vista » HP Universal. Double-click on "Install.exe", and simply follow the on-screen installation instructions. When asked, select "Traditional Mode".

2

Installing the CheckJet

Be sure to install and test the printer on the network before proceeding.

Power on the laser printer and wait for ready/online status.



WARNING

Use only the included power supply. Using another power supply will void the warranty.

3

Detach the Ethernet network cable from the printer and attach it to the "Input from Host" port on the CheckJet.

4

Attach the supplied 3 foot Ethernet cable to the printer's Ethernet port (the same port from which the network cable was detached in the previous step).

5

Attach the other end of the supplied 3 foot Ethernet cable to the "Output to Printer" port on the CheckJet.

6

Plug the supplied 5 volt power supply into a 110 volt outlet. It is preferable, but not required, to plug it into the same power strip as the printer. See WARNING box on this page.

7

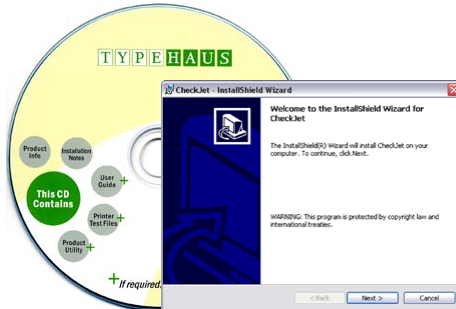
Insert the round power supply connector into the CheckJet "Power Supply" port. The CheckJet Power LED will light green (possibly after blinking orange), then the Status LED will light green.

8

Insert the CheckJet's memory card to enable printing of the secured signature.

(Continued on reverse side.)





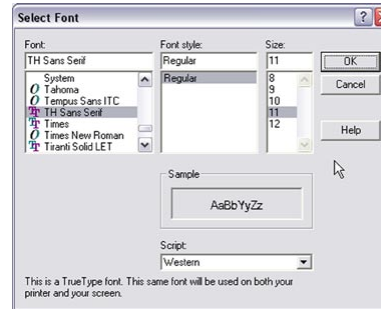
9

Font Installation

The CD supplied with the CheckJet contains a special check printing font to use with QuickBooks®.

To install the font, use Windows File Explorer to browse to the CD and then double-click on "Setup.exe" to start the installation process. Simply follow the on-screen instructions.

The setup process will install the check printing font to the system fonts folder.



10

Preparing QuickBooks®

To work properly with the CheckJet, the following check printing settings must be made within QuickBooks.

1. From the QuickBooks File menu, choose Printer Setup and then select Check/PayCheck.
2. On the Settings tab, under Check Style select Voucher.
3. On the Fonts tab, select the Font button.
4. Select the TH Sans Serif font from the list and select 11 point as the size. Select OK.
5. Click OK as necessary to get back to the main QuickBooks application window.

Congratulations!

You are now ready to automatically sign the checks printed using your normal QuickBooks check printing process.

The standard signature solutions that come with the CheckJet are designed to work with the QuickBooks default alignment settings.

TypeHaus, Inc.
655 Second Street
Encinitas, CA 92024
760.334.3555

Select option 2 for support.

TypeHaus Reorder Part Number 11B535-00

© 2008 TypeHaus, Inc. All rights reserved. (1051-081215A)
QuickBooks is a registered trademark of Intuit, Inc.
CheckJet is a trademark of TypeHaus, Inc.