

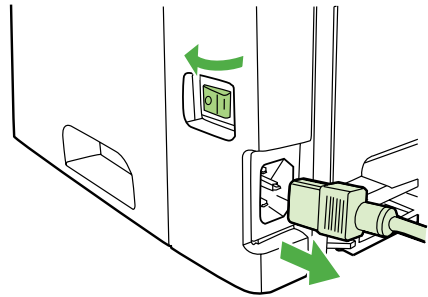
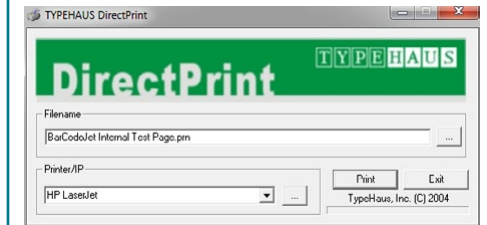
Installation & Test Guide

For HP LaserJets & MFPs with Compact Flash

Extending the Resources and Abilities of Your Printer

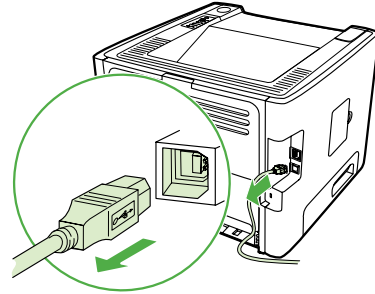
Congratulations!

You are now ready to print bar codes using your LaserJet. The CD that came with your solution contains an application for testing the new capabilities.



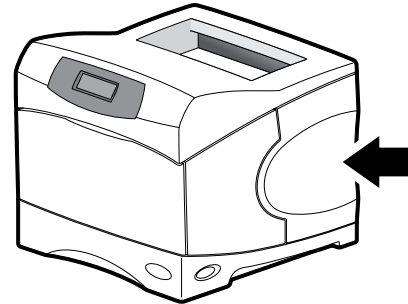
1

Use the power switch to turn off the printer and then unplug the power cord from the printer.



2

Unplug all remaining cables and cords from the printer.

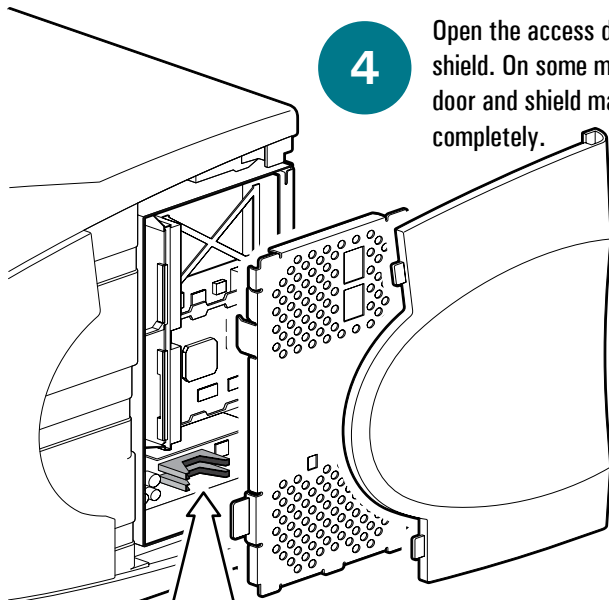


3

Locate the access door located on the side of the printer. The location can vary by model.

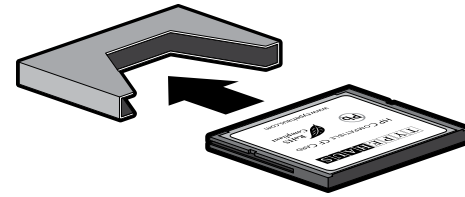
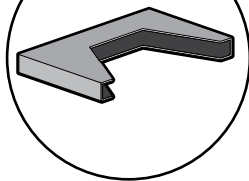
4

Open the access door and metal shield. On some models the door and shield may remove completely.



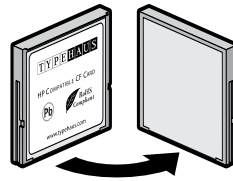
5

Locate the compact flash (CF) connectors. The number of CF connectors, and the location and orientation can vary by model.



6

Insert the solution into any open CF connector. Do not remove any existing CF cards. The card will only insert in one orientation. If it does not slide easily, rotate it and try again. A very small amount of extra pressure will be necessary at the very end to make sure the card is completely plugged into the short pins at the base of the connector. Never use strong force. Strong force may damage your printer.



7

Close the shield and access door, reconnect all cables and cords, then turn the power switch on.

1. Insert the CD in your CD/DVD drive and use Windows File Explorer to browse the CD and double-click on DirectPrint.exe.
2. In the "Filename" section, click the "... " button. Browse to select the file "BarCodeJet Internal Test Page.prn" also located on the CD.
3. In the "Printer/IP" section, select the printer from the dropdown list or enter the IP address if it is attached to the network.
4. Select the "Print" button.
5. Compare the printed test page to the reverse side of these instructions.
6. Select the "Exit" button to close the application.

TypeHaus Reorder Part Number: 11B521-00

Solutions
Business Partner



TypeHaus, Inc.
655 Second Street
Encinitas, CA 92024
760.334.3555
www.typehaus.com

BarCodeJet® Internal

Test Page

TYPEHAUS

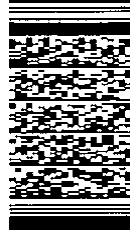
Extending the Resources and Abilities of Your Printer

MSI Plessey

987654



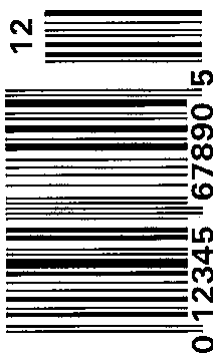
PDF417



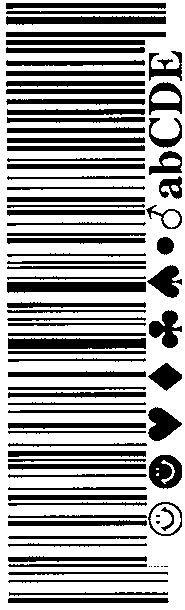
Code 39



UPC-A



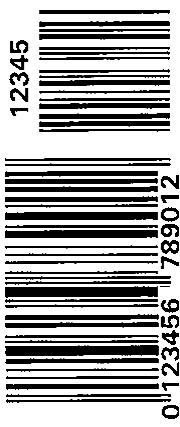
Code 128 Auto A/B/C



Code 25 Industrial



EAN-13



EAN-8



Code 128C



© 2011 TypeHaus, Inc.
All rights reserved.
(3545-111217A)